

# SAFETY AND SCHOOL ENVIRONMENT

## Non-CSAP Course Offerings

Your School Offers	does	does not
• art.....	<input checked="" type="checkbox"/>	<input type="checkbox"/>
• drama or theater.....	<input type="checkbox"/>	<input checked="" type="checkbox"/>
• music.....	<input checked="" type="checkbox"/>	<input type="checkbox"/>
• physical education.....	<input checked="" type="checkbox"/>	<input type="checkbox"/>
• opportunity for civic or community engagement.....	<input checked="" type="checkbox"/>	<input type="checkbox"/>
• internet safety program.....	<input checked="" type="checkbox"/>	<input type="checkbox"/>
• International Baccalaureate.....	<input type="checkbox"/>	<input checked="" type="checkbox"/>
• extracurricular activities.....	<input checked="" type="checkbox"/>	<input type="checkbox"/>
• athletics.....	<input checked="" type="checkbox"/>	<input type="checkbox"/>
• preschool program.....	<input checked="" type="checkbox"/>	<input type="checkbox"/>
• full-day kindergarten program.....	<input checked="" type="checkbox"/>	<input type="checkbox"/>
• before-and-after-school care program.....	<input type="checkbox"/>	<input checked="" type="checkbox"/>

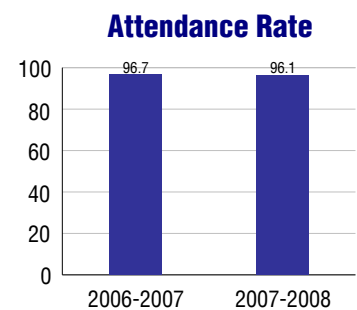
## Safety and Discipline

Safe schools are a top priority for parents, teachers, and communities. Your school safety and discipline record for the 2007-2008 school year is:

Type of Incident	Number of Incidents Reported	Percent of Total Incidents
Substance Abuse - Drugs		
Substance Abuse - Alcohol		
Substance Abuse - Tobacco		
Felony Assaults		
Fights		
Possession of Dangerous Weapons		
Other Violations Code of Conduct	3	100.0%

## Student Attendance and School Calendar

2007-2008	Your School
Enrollment	87
Average Daily Attendance	84
Student Dropouts	N/A



## Student Information Over Time

	2005-2006	2006-2007	2007-2008
Student Enrollment Stability	92.7%	98.0%	95.4%
Students Eligible for Free and Reduced Lunch	60.9 %	71.7 %	62.1 %

For more information and further details about this report, visit [www.state.co.us/schools](http://www.state.co.us/schools)  
 Colorado Department of Education, 201 East Colfax Ave. Denver, CO 80203  
**Walsh Elementary School**  
 0230/9222/E  
 301 West Poplar . Walsh, CO 81090 . 719-324-5400  
 10/20/2008

# DISTRICT TAXPAYER'S REPORT

Sources of School District Revenue	2007	District Source of Funds 2007
Local Tax Contribution	\$612,161	
State Tax Contribution	1,165,821	
Federal Grants	144,645	
State Grants	294,952	
Private/Partnership Grants	0	
Other Discretionary Income	140,043	
<b>Total District Operating Revenue</b>	<b>\$2,357,622</b>	
Long Term Debt Proceeds	0	
<b>Total District Revenue</b>	<b>\$2,357,622</b>	
<b>Total District Operating Revenue Per Pupil =</b>	<b>\$16,901</b>	
<b>Total District Revenue Per Pupil (Including Long Term Debt) =</b>	<b>\$16,901</b>	
<b>District Per Pupil Operating Revenue =</b>	<b>\$10,269</b>	
<b>State Average Per Pupil Operating Revenue =</b>	<b>\$6,080</b>	
District Use of Funds	2007	District Use of Funds 2007
Instructional & Instructional Support	\$1,163,794	
Administration	315,401	
Building & Facilities Maintenance	267,427	
Operational Expenditures	175,280	
Debt Service	0	
Other Expenditures	78,074	
<b>Total District Operating Expenditures</b>	<b>\$1,999,976</b>	
Capital Expenditures	273,073	
<b>Total District Use of Funds</b>	<b>\$2,273,049</b>	

## District Debt and Capital Construction & Equipment

Total Outstanding Bonded Debt	\$0
Average Annual Percentage Interest Rate on Debt	0%
Amount Raised from Most Recent Bond	\$0
Amount Spent on New Buildings During Last 2 Years	\$341,205

## Accreditation

Accreditation is Colorado's primary accountability system, incorporating achievement levels, academic growth, achievement gaps, post-secondary readiness, improvement planning, and compliance. The state accredits districts and districts accredit individual schools.

District Accreditation Status for the 2007-2008 school year:

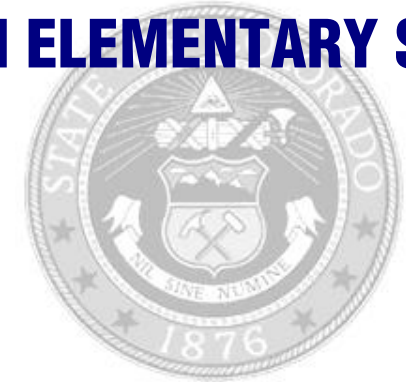
## Voter Approved Funding Changes

Your community did  /did not  hold an election in November 2006

The following items have been approved by voters:

- TABOR Override
- Bond
- Mill Levy Increase

# WALSH ELEMENTARY SCHOOL



WALSH RE-1

<http://www.walsh eagles.com/>  
**School Accountability Report**  
**2007-2008 School Year**

## School Performance Summary

**Overall Academic Performance on State Assessments** **Excellent**

**Academic Growth of Students** **Typical**

Winner of a John Irwin School of Excellence for the 2007-2008 School Year

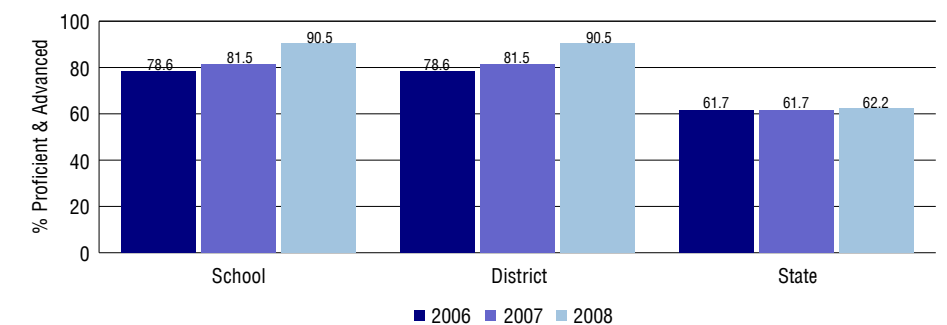
### Overall Academic Performance on State Assessments

Each school in the State received a rating of "Excellent", "High", "Average", "Low", or "Unsatisfactory" for student academic performance based on 2007-2008 CSAP and COACT results. The rating is calculated using weighted percentages of each CSAP proficiency level for all content area and grade results for the school, as well as average COACT Reading, Writing, and Math Grade 11 results.

### Academic Growth of Students

Each school in the State received a rating of "Low", "Typical", or "High" for student academic growth based on CSAP results. The calculation method is new for 2007-2008. The rating is calculated using student percentile scores matched over two years. More information about the Overall Academic Performance rating and Academic Growth of Students calculations can be found here: [http://www.cde.state.co.us/cdeassess/SAR\\_Info.html](http://www.cde.state.co.us/cdeassess/SAR_Info.html).

## Percent Proficient and Advanced for Elementary Grades for All Content Areas



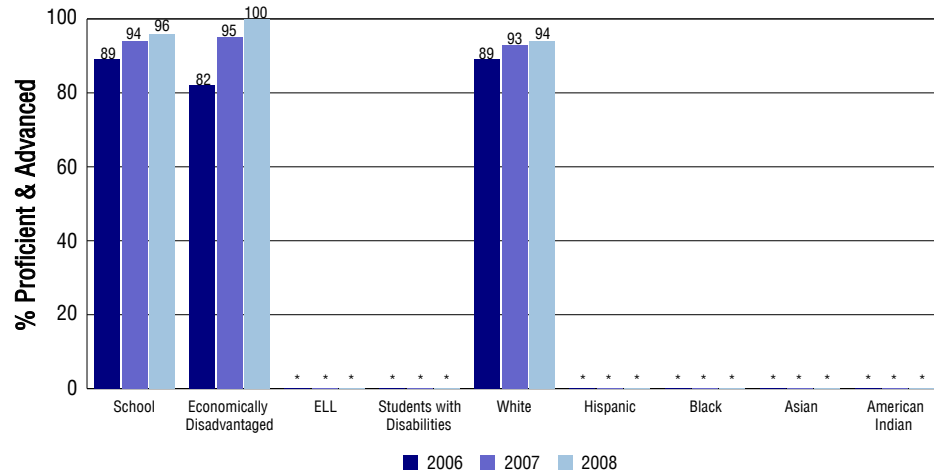
## Student Test Scores Used For Calculating Overall Academic Performance

89.2%	Test Scores Counted
4.1%	Test Scores not used due to Language
6.8%	Test Scores not used due to New Student

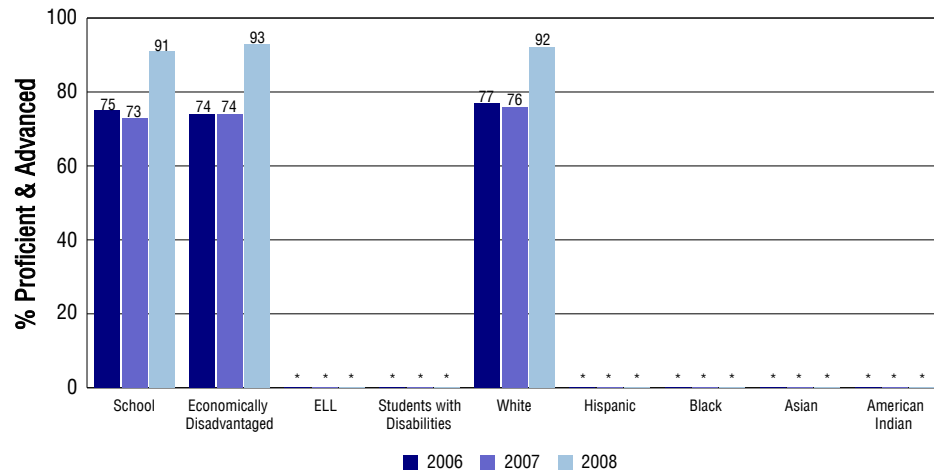
## STUDENT PERFORMANCE

These graphs show the percent Proficient and Advanced trends over the past three years for Reading, Writing, and Math. Results are presented for the entire school for all reported grades as well as for different subgroups. Note: \* indicates any group with less than 16 student results to be reported.

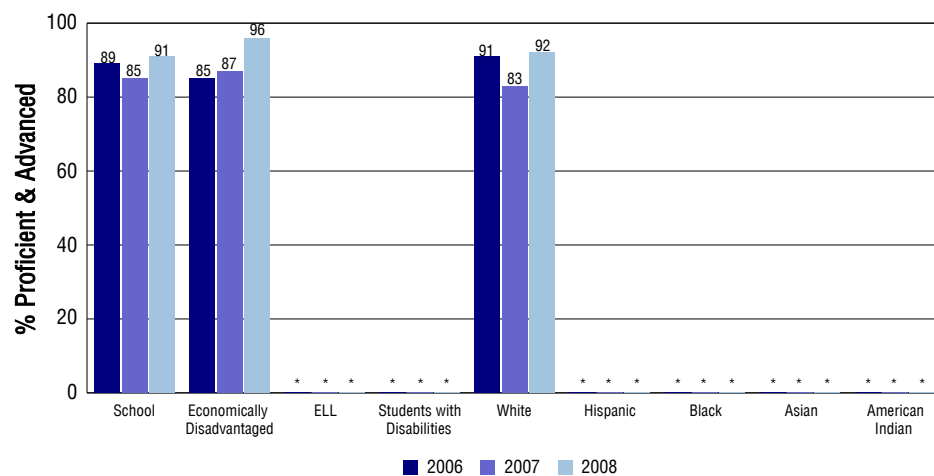
### Reading



### Writing



### Math



## SCHOOL INFORMATION

### School Pride (as submitted by your district)

- One of two Model Davis Learning Schools in the country.
- Number one district in the state in reading proficiency.
- Great parent involvement, 100% participation in parent teacher conferences.
- Award winning academics.

### School Goals (as submitted by your district)

Increase student achievement in all core content areas at all grade levels, so students are showing a year's growth in a year's time, as measured by established assessment. Demonstrate more than one year's growth in a year's time in student achievement for all underperforming subpopulations. Implement a grade level curriculum guide that is aligned to the Colorado State Content Standards and Colorado Department of Education Assessment Grade Level Frameworks in all academic areas. Provide a school climate that is safe, inviting, stimulating, and conducive to high student achievement.

### No Child Left Behind - Adequate Yearly Progress

Did your school make AYP in reading? Yes Math? Yes  
 How many targets does your school have? 12 Met? 12

Based on this school's academic performance, your child may be eligible for one or more of the following; ask your school if your child qualifies for:

Extra academic instruction either before or after-school, or in the summer  
 Mentoring

For additional information regarding Adequate Yearly Progress please visit  
<http://www.cde.state.co.us/FedPrograms/ayp/index.asp>

### How Walsh Elementary School Compares To Elementary Schools Within A 75-Mile Radius

School	Program Type	Academic Performance	Academic Growth
V.I.L.A.S. Online School(1)	Online	Low	No Rating
Vilas Elementary School(1)		High	No Rating
Springfield Elementary School(2)		High	Typical
Campo Elementary School(3)		Average	No Rating
Pritchett Elementary School(4)		High	No Rating
Granada Elementary School(5)		Average	Typical
Shanner Elementary School(6)		Average	Typical
Parkview Elementary School(7)		Average	Typical
Washington Elementary School(7)		High	Typical
Lincoln Elementary School(7)		Low	Typical

1 Located in Vilas RE-5 School District.  
 2 Located in Springfield RE-4 School District.  
 3 Located in Campo RE-6 School District.  
 4 Located in Pritchett RE-3 School District.  
 5 Located in Granada RE-1 School District.

6 Located in Holly RE-3 School District.  
 7 Located in Lamar RE-2 School District.

## ABOUT OUR STAFF

### School Employment

Each year, your district reports to the Colorado Department of Education on the number of adults who work in your school, as well as the type of work they do. Last year, your school employed:

	Your School		District	
	Full Time	Part Time	Full Time	Part Time
Teachers	10	3	18	1
Paraprofessionals	2	3	4	2
Administrators	0	0	2	1
Other Professionals	0	0	0	1
School Support	3	0	8	6
School Counselors	0	0	1	0
School Librarians	0	0	0	0
<b>Total Staff</b>	20		42	

### Students per Teacher Ratio

	Student Enrollment	Students per Teacher
Grade 1	11	6.4
Grade 2	10	5.8
Grade 3	7	4
Grade 4	9	6.4
Grade 5	13	9.3
Grade 6	15	10

### Professional Experience of Teachers

	Your School	District
Average years of teaching experience	17	16
Percent of teachers teaching in the subject in which they received their degree	N/A	N/A
Number of teachers with Masters or Doctoral degrees	4	6
Teachers with 3 years or more of teaching experience	12	17
Teachers with less than 3 years of teaching experience	1	2
Number of professional development days	5	5

### Salaries

	Your School	District	State
Average Teacher Salary	\$33,413	\$32,557	\$47,494
Average Administrator Salary	\$0	\$57,944	\$80,444

Principal: Kyle R. Heberd (Superintendent)

Number of years as Principal at this school: 1 (New Hire 2007/2008)

Number of years as Principal at any school: 8